

The Information Infrastructure Initiative undertakes the information infrastructure services required both within and outside Kyushu University, as well as working to strengthen cybersecurity. Its mission is to supply a safe, easy-to-use information infrastructure for everyone related to the University, including students, staff and third parties.

#### Purpose of establishment The Information

The Infrastructure Initiative was established in 2007 with the intention of organizing a University-wide information infrastructure, and providing integrated support for education, research and University operations using information technology.

The Cybersecurity Center was established in December 2014 to centralize and strengthen Kyushu University ' s education, research, and all other activities in the field of cybersecurity.

#### Organizational diagram

The Information Infrastructure Initiative is organized into four bodies: the Research Institute for Information Technology; the Information System Department; the Working Groups for IT Environment, which was founded to establish links between the previous two bodies and the individual University departments; and the Cybersecurity Center. It is a University-wide initiative.(Information Infrastructure Initiative organizational structure diagram on p.10)

#### Outline of activities

The Initiative ' s main activities are shown on 82 under “ Information Services. ”

(1)Improving the standard of, and ease of access to, the information communications environment across the whole university, ensuring a safe, easy-to-use information infrastructure for students and staff, and providing an information environment that supports education, research, treatment and administration.

The following activities promote improvements in the information environment throughout the University:

- Networking
- Faculty support
- Education Faculty support
- Authentication and authorization

- •Software
- •Infrastructure for Multilayer Interoperability (IMI: Qdai Mail via Microsoft 365)
- •ISMS operation

(2) In addition to playing its role in the organization of an information infrastructure for Japan as a whole, the Initiative plays a local role in providing a regional information infrastructure and playing a central and instructional part in utilization activities.

Furthermore, the Research Institute for Information Technology has one of the country ' s leading calculation capabilities, which can be used in databases and networks, not only to implement joint services for users nationwide, but also to provide the most cutting-edge research for joint use and joint research projects.

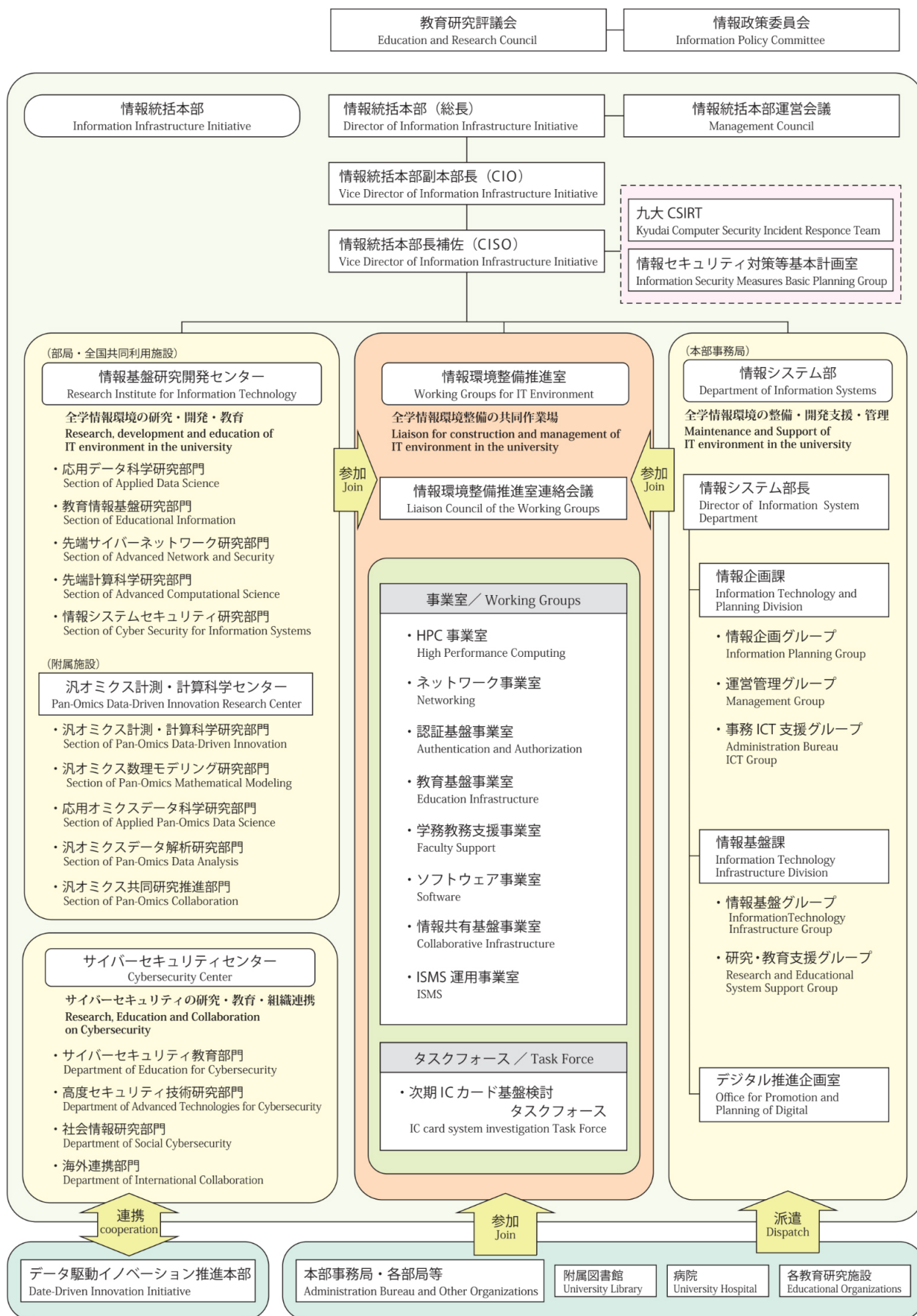
The following project activities are being undertaken in order to ensure the formation of an information environment that promotes nationwide joint utilization/joint research.

- •HPC (High-performance Computing) Project

(3) The Cybersecurity Center provides education to all students, advanced education, and education aimed at cultivating specialists.

The Center ' s education targeted at all students covers the basics of information ethics, law, privacy, case studies, and equipment settings, with the aim of sending out into society graduates who will neither be at a disadvantage nor cause a nuisance to others in their future lives in cyberspace. Its advanced education involves developing educational programs centered on individual cybersecurity topics required for specialisms in each undergraduate school, enabling experts in various fields to learn about the cybersecurity issues relevant to them. The Center ' s efforts to cultivate cybersecurity specialists focus on lectures about advanced technologies and cyber-exercises, through which it nurtures work-ready personnel for the field of cybersecurity.

Information Infrastructure Initiative Organizational Diagram



- CIO (Chief Information Officer): Director appointed by the President
- CISO (Chief Information Security Officer): Person appointed by the CIO

### Want to know more

Information Infrastructure Initiative website <https://iii.kyushu-u.ac.jp/en/> Cybersecurity Center website  
<https://cs.kyushu-u.ac.jp/en/>

### Contact

Information Infrastructure Initiative • General Consultation Desk 092-802-2682 ext.:90-2682 help [iii.kyushu-u.ac.jp](mailto:help@iii.kyushu-u.ac.jp) (General information about services of the Information Infrastructure Initiative) • Information Technology and Planning Division, Information System Department 092-802-2617 ext.:90-2617 sojokikak [jimu.kyushu-u.ac.jp](mailto:jimu.kyushu-u.ac.jp) (Concerning information planning, general affairs, finance, office LAN, and business systems) • Information Technology and Planning Division, Department of Information Systems 092-802-2682 ext.:90-2682 (Networks, University-wide email service (Qdai Mail), campus licenses, university-wide IC cards, education and research support services, authentication services and so on) Cybersecurity Center 092-802-2661 ext.:90-2661 [cs-staff@cs.kyushu-u.ac.jp](mailto:cs-staff@cs.kyushu-u.ac.jp) (Regarding cybersecurity education and research) • Kyudai CSIRT (Regarding security incidents and suspicious emails) 092-802-2617 ext.:90-2617 sec-incident [iii.kyushu-u.ac.jp](mailto:iii.kyushu-u.ac.jp) • Basic Security Measures and Strategic Planning Office (Regarding basic security measures and strategic planning) 092-802-2617 ext.:90-2617