

The University's health and safety is organized on an individual campus basis, since the University Campus is spread over such a wide area. Each project has a management structure in place, based on the Industrial Safety and Health Act and other related laws.

For the updated information, please refer to the website of the Kyushu University Office for Promotion of Environmental Management, Health, and Safety.

(1) Location of health and safety managers

- 1. A general health and safety manager is appointed to oversee health and safety matters, with the exception of the Hakozaki Campus, affiliated university forests, and the Kyushu University Shinmachi Campus.
- 2. A health and safety manager is appointed to manage technical matters related to the prevention of health hazards on campuses, with the exception of the Hakozaki Campus, affiliated university forests, and the Kyushu University Shinmachi Campus.
- 3. A health and safety promotion manager is appointed to manage technical matters related to the prevention of dangers and health hazards, at the Hakozaki Campus, affiliated university forests, and the Kyushu University Shinmachi Campus only.
- 4. An industrial physician is appointed to manage the health of staff members to oversee staff health management, with the exception of the Hakozaki Campus, affiliated university forests, and the Kyushu University Shinmachi Campus.

(2) Establishment of committees, etc.

- 1. A Health and Safety Committee is established to investigate and discuss issues related to health and safety at each workplace, with the exception of the Hakozaki Campus, affiliated university forests, and the Kyushu University Shinmachi Campus.
- 2. Maidashi Campus, Ito Center and East/West Ito Campus which are comprised of various departments have established departmental health and safety committees that operate under regional Health and Safety Committees.

(3) Establishment of an Office for Promotion of Environmental

Management, Health and Safety The Office for Promotion of Environmental Management, Health and Safety was

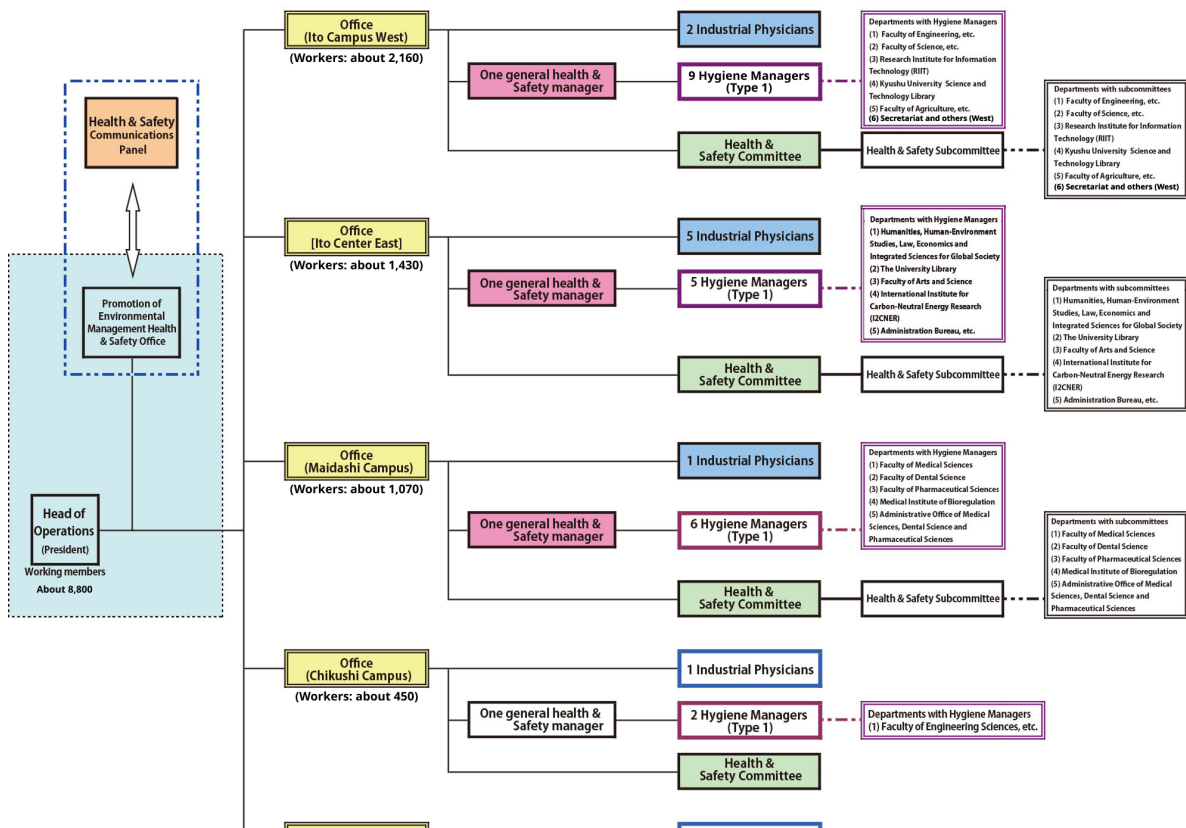
established with the objective of providing support for University-wide health and safety and environmental conservation activities and carries out planning, proposals and implementation of University-wide health and safety-related projects.

(4) Establishment of Health and Safety Communications Panel

The Health and Safety Communications Panel is comprised of general health and safety managers, industrial physicians and others, and it typically holds an annual meeting to share information on a University-wide basis, organized by the head of the Office for Promotion of Environmental Management, Health and Safety. Health and Safety Management Structure at Kyushu University.

◎ Health & Safety Management Structure of Kyushu University

As of June 1, 2025



Want to know more

Website of the Office for Promotion of Environmental Management, Health and Safety, Kyushu University

<https://anei.jimu.kyushu-u.ac.jp/>

Contact

Hygiene Management Section, Environmental Safety Management Division, General Affairs Department

092-802-2075 ext.:90-2075 E-mail syjanzen@jimu.kyushu-u.ac.jp