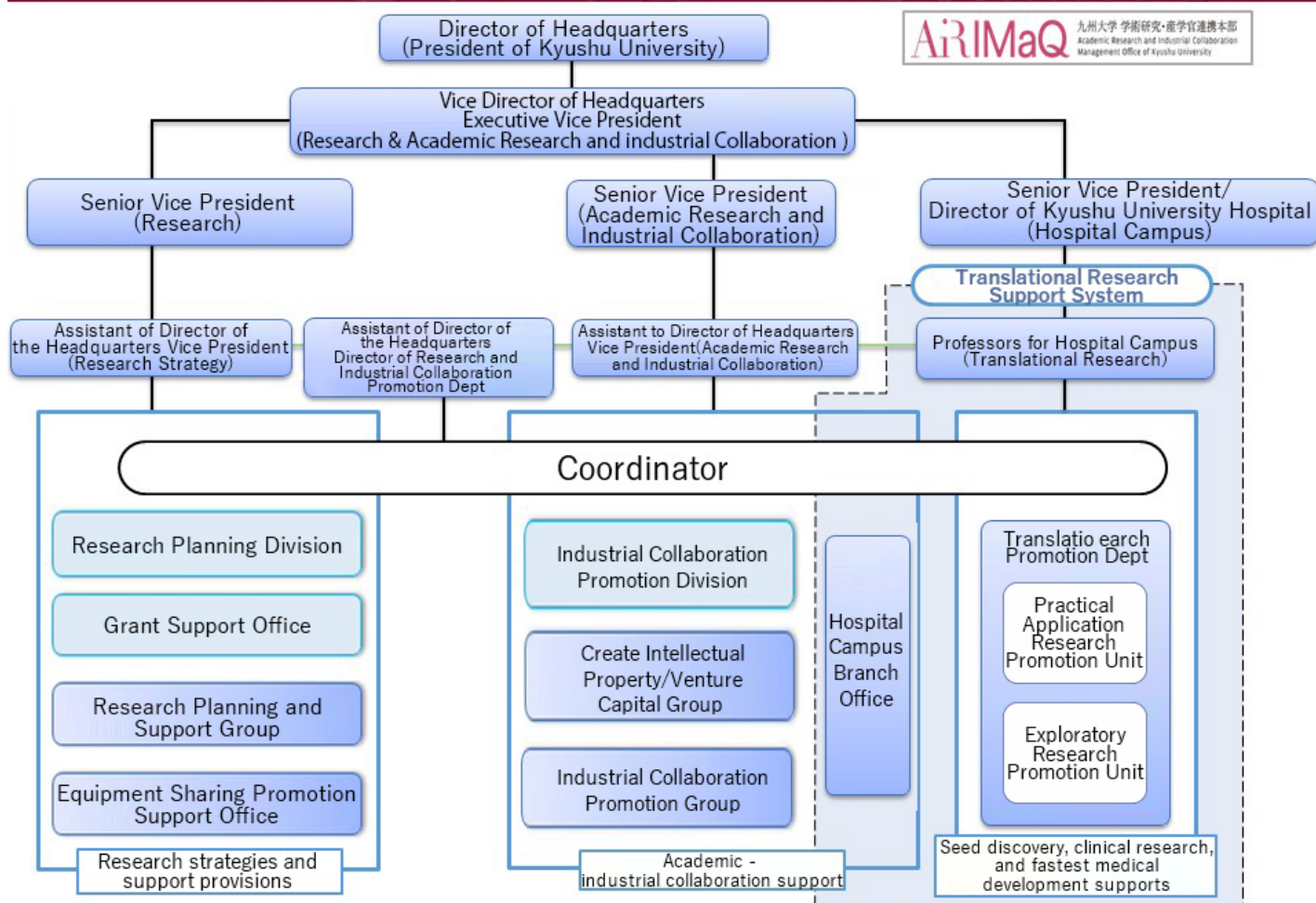


As the body in charge of supporting efforts to promote academic research and managing collaboration with industry and government at Kyushu University, the mission of the Academic Research and Industrial Collaboration Management Office is to contribute to the development of both academic knowledge and society, in accordance with the mission of a national university.

The office provides support for the formulation of research strategies and for the planning and coordination of research projects, the submission of applications concerning such projects, and their implementation. In addition, it promotes collaboration with industry and government both within Japan and overseas, as well as providing administrative support for researchers, schools, institutes, and faculties in identifying intellectual property and acquiring rights to it.



Want to know more

- Academic Research and Industrial Collaboration Management Office website <https://airimaq.kyushu-u.ac.jp/en/index.php>

## Contact

- General Affairs Section, Research Planning Division, Research and Industrial Collaboration Promotion Department

092-802-2320 ext.:90-2320